

Fracture Classification

- Judet and Letournel (JBJS 1964)
 - Detailed radiographic examination
 - 3 Standard Plain Radiographs
 - 10 Fracture types
 - 5 Elementary Patterns
 - 5 Associated Patterns

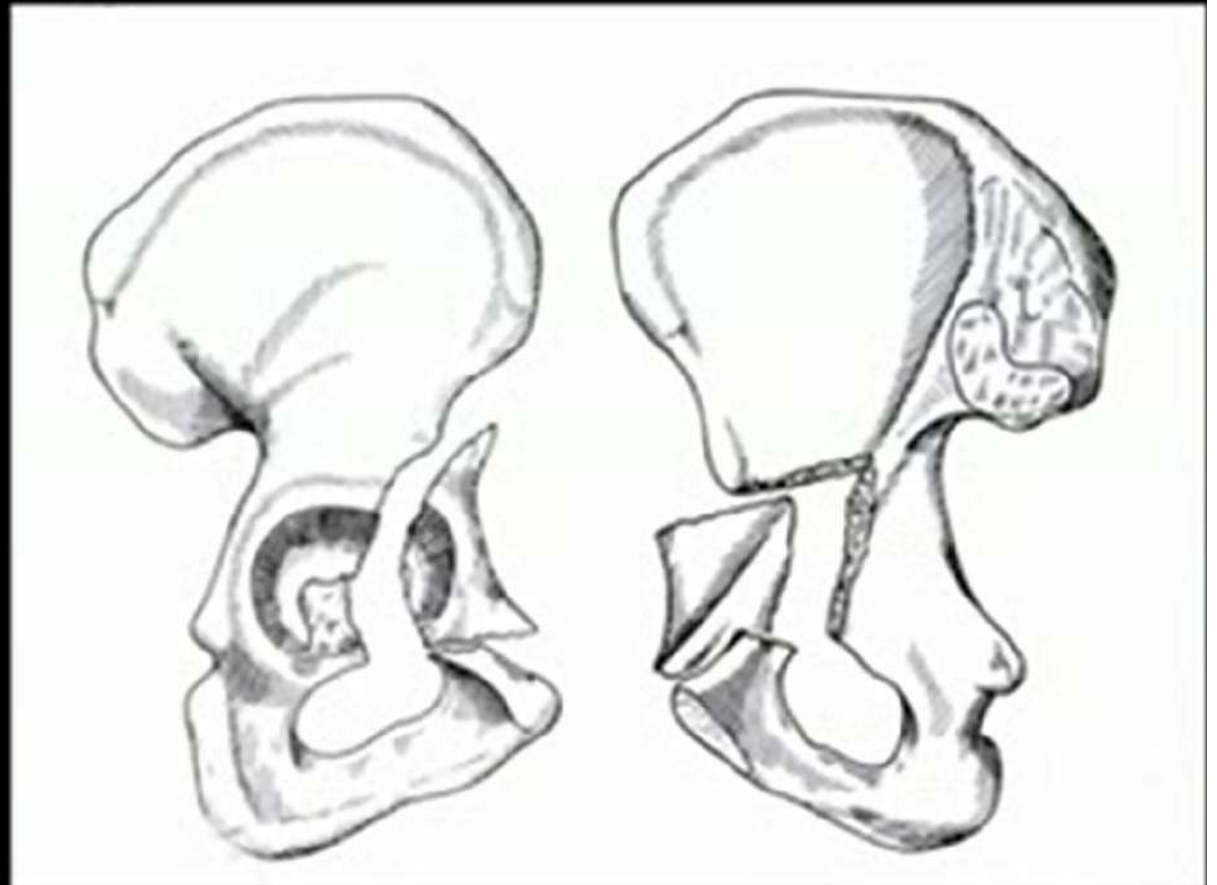
Fracture Classification

Importance

Accurate Interpretation of Radiographs and Classification of the fracture determines the Surgical Approach to the Acetabulum.

Elementary Fracture Patterns

- Part or all of one column supporting the acetabulum has been detached
 - Anterior Wall
 - Anterior Column
 - Posterior Wall
 - Posterior Column
 - Transverse



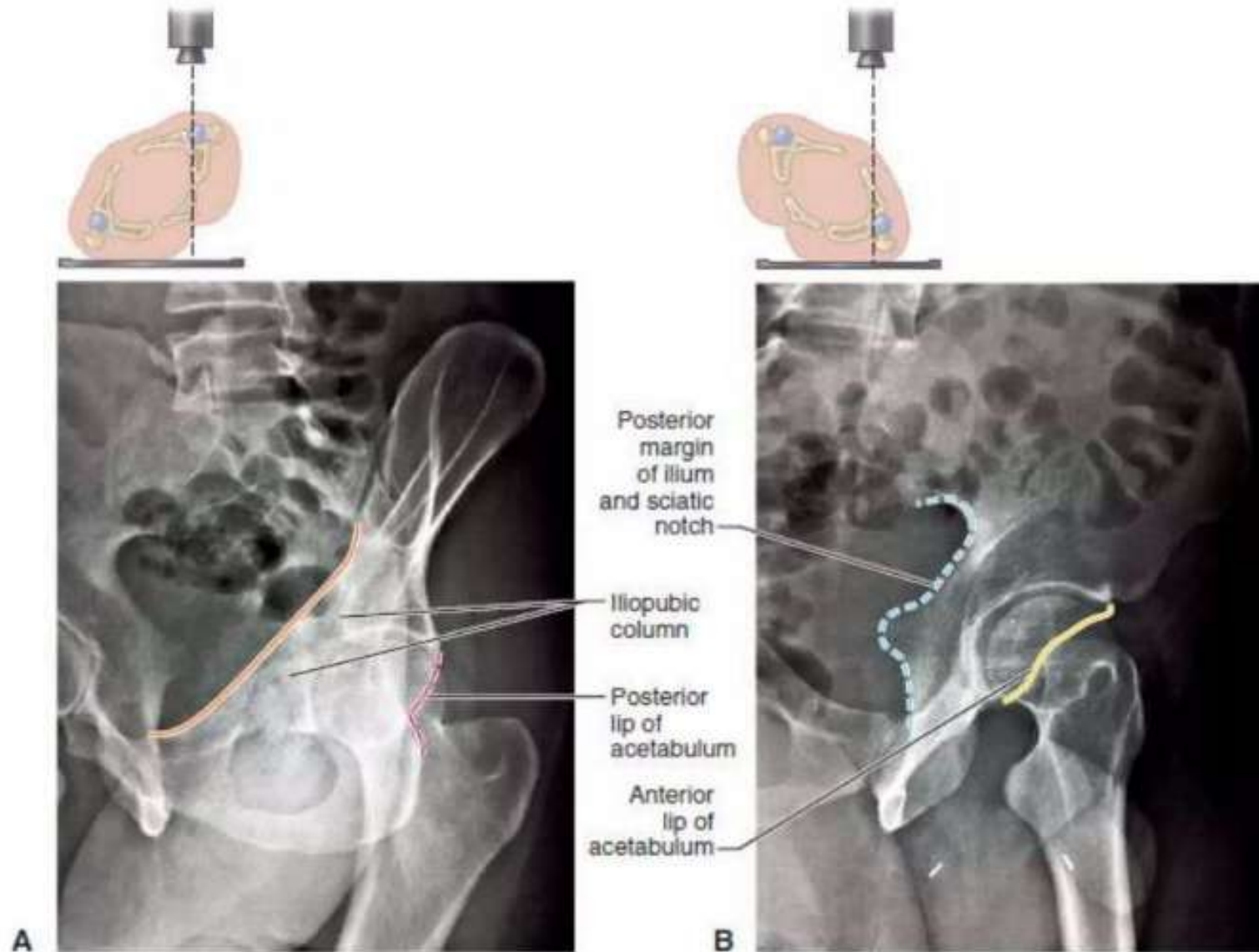
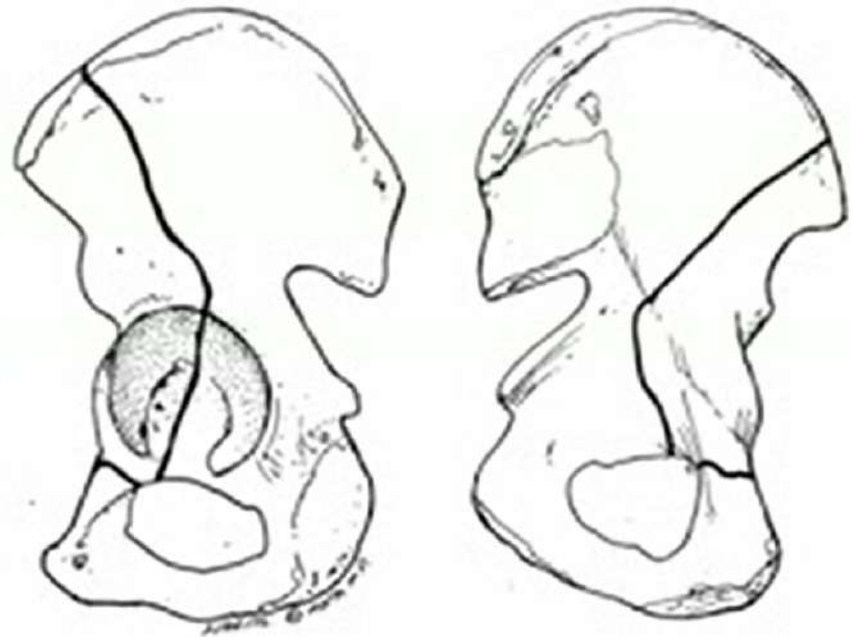


FIGURE 56-11 Judet views of the hip. **A**, Obturator oblique view. **B**, Iliac oblique view.



Elementary Fracture Patterns

- Part or all of one column supporting the acetabulum has been detached
 - Anterior Wall
 - Anterior Column
 - Posterior Wall
 - Posterior Column
 - Transverse

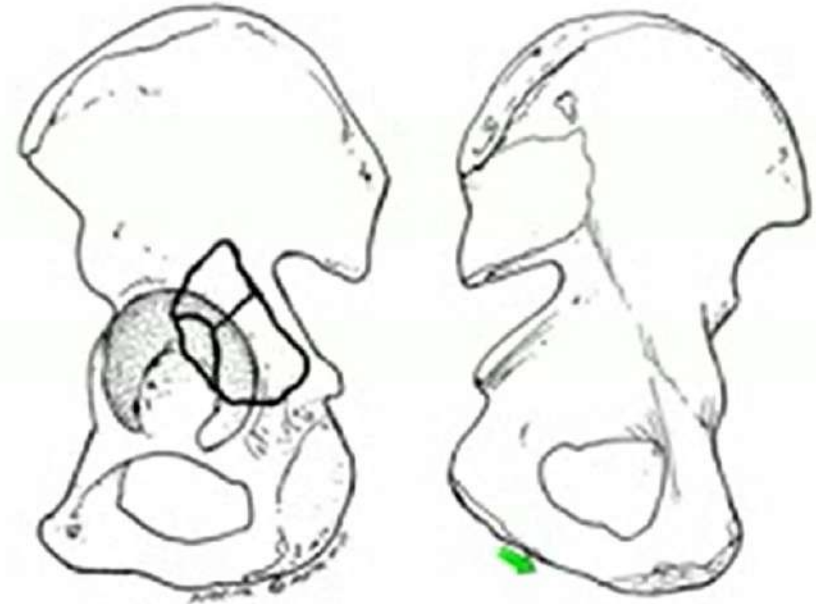


Anterior Column



Elementary Fracture Patterns

- Part or all of one column supporting the acetabulum has been detached
 - Anterior Wall
 - Anterior Column
 - Posterior Wall
 - Posterior Column
 - Transverse

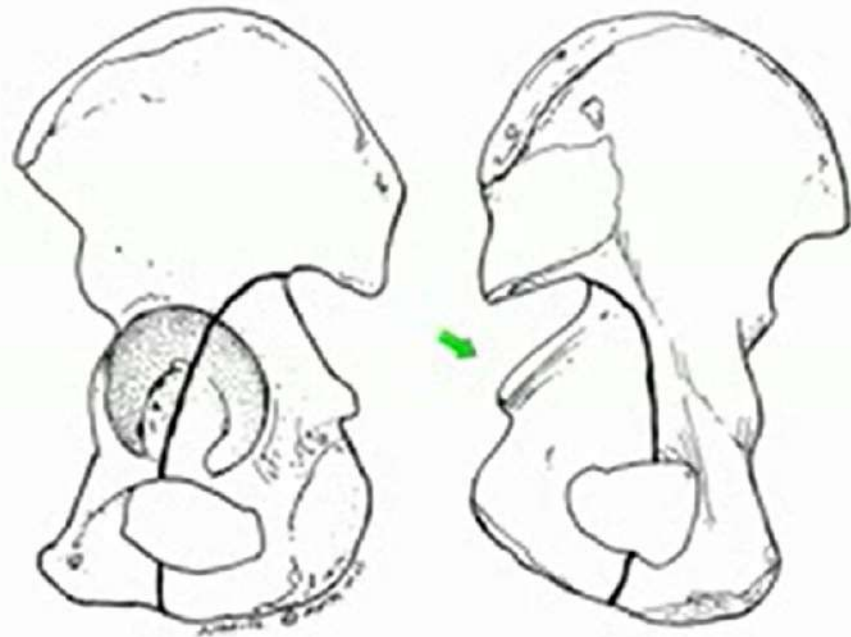


Posterior Wall

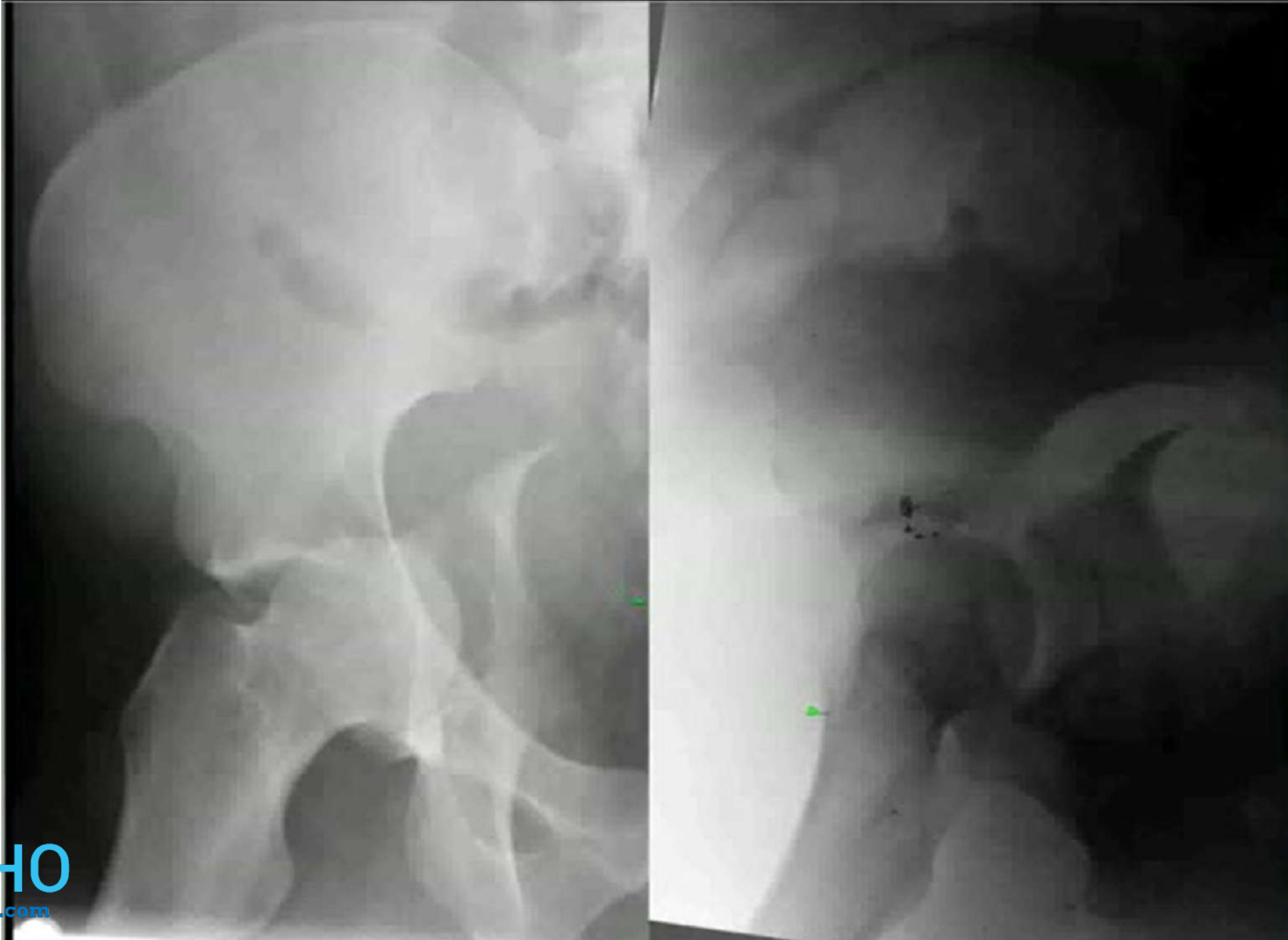


Elementary Fracture Patterns

- Part or all of one column supporting the acetabulum has been detached
 - Anterior Wall
 - Anterior Column
 - Posterior Wall
 - Posterior Column
 - Transverse

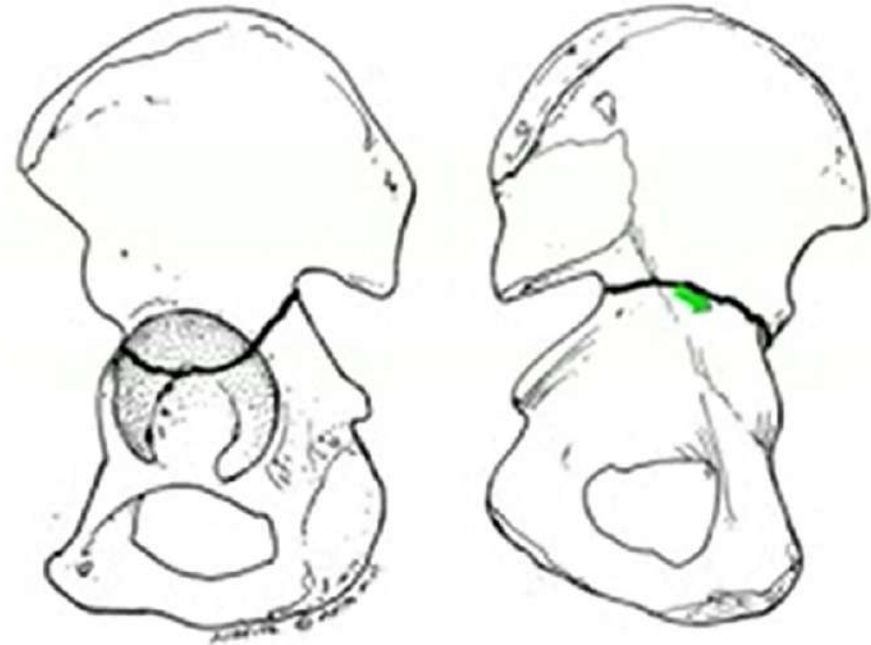


Posterior Column



Elementary Fracture Patterns

- Part or all of one column supporting the acetabulum has been detached
 - Anterior Wall
 - Anterior Column
 - Posterior Wall
 - Posterior Column
 - Transverse



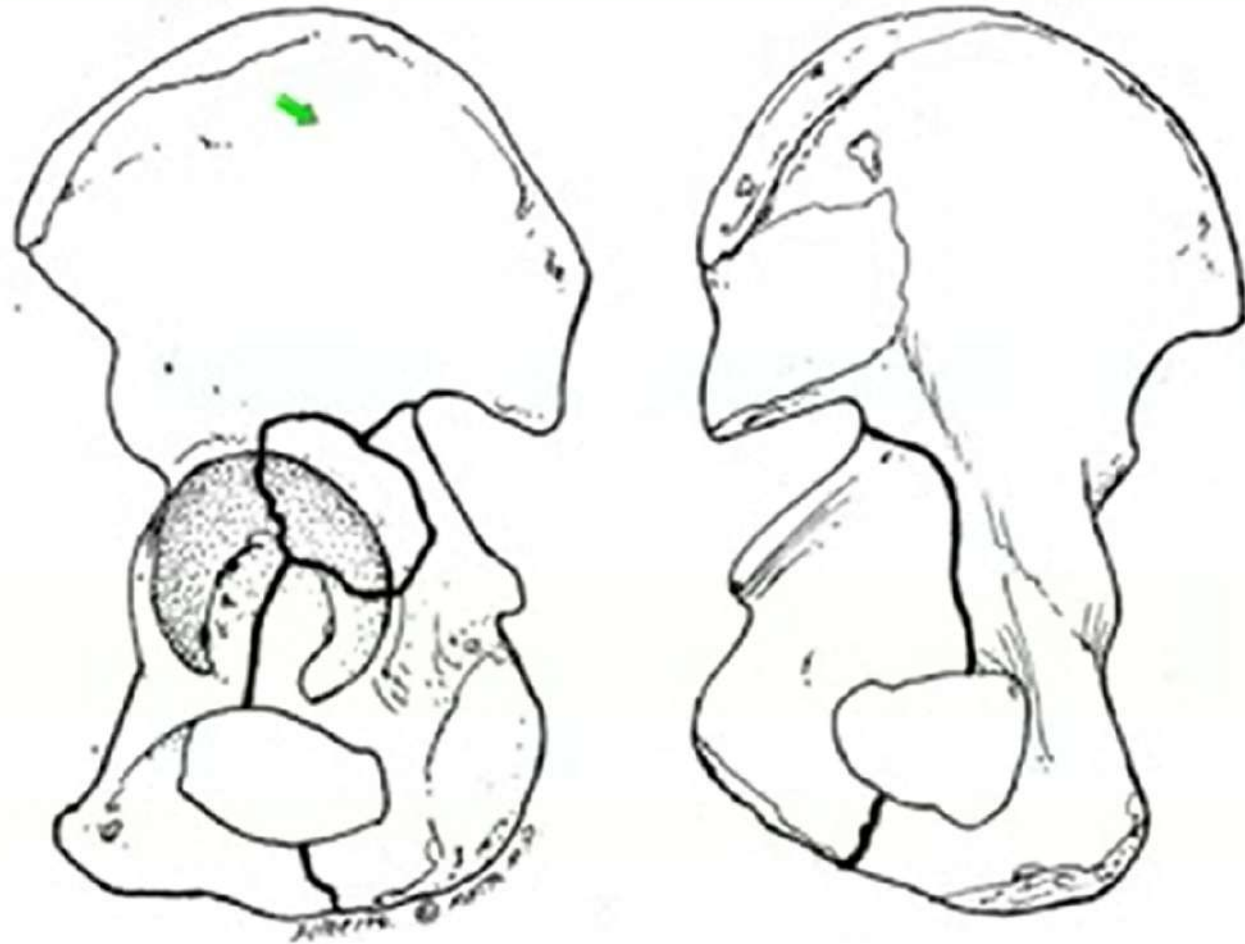
Transverse



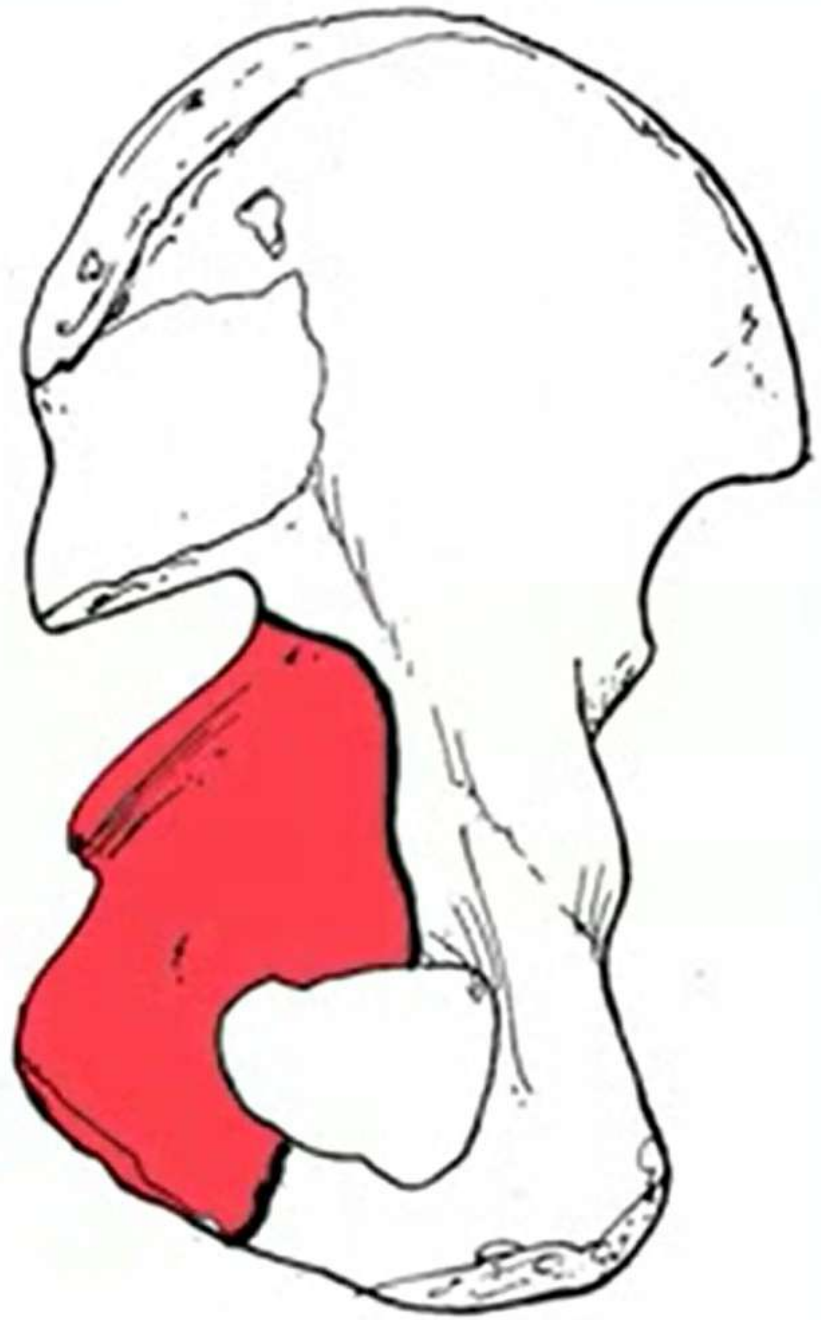
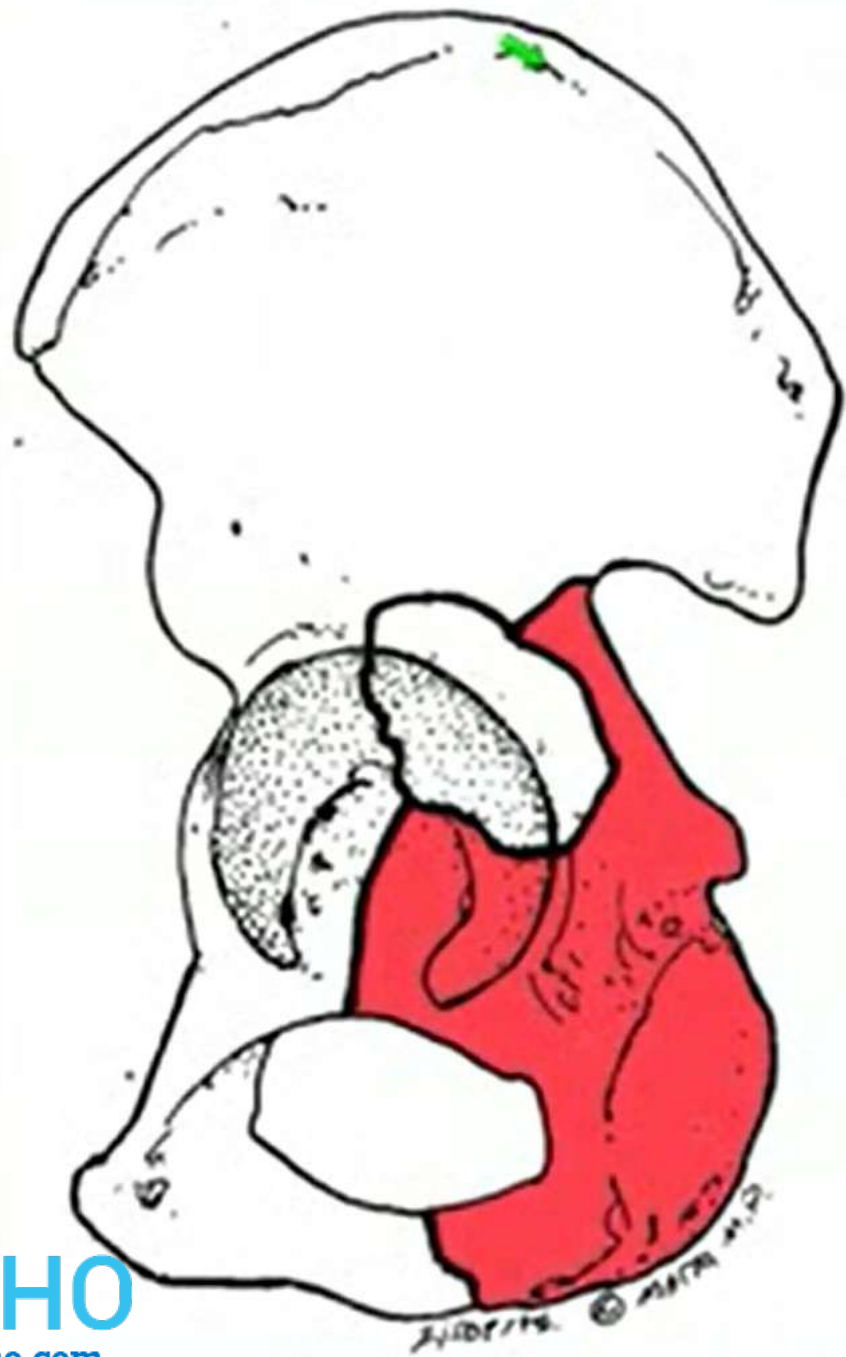


Associated Fracture Patterns

- Include at least 2 of the elementary forms
 - Posterior Column plus Posterior Wall
 - Transverse plus Posterior Wall
 - Anterior plus Posterior Hemitransverse
 - T-shaped
 - Associated Both Column

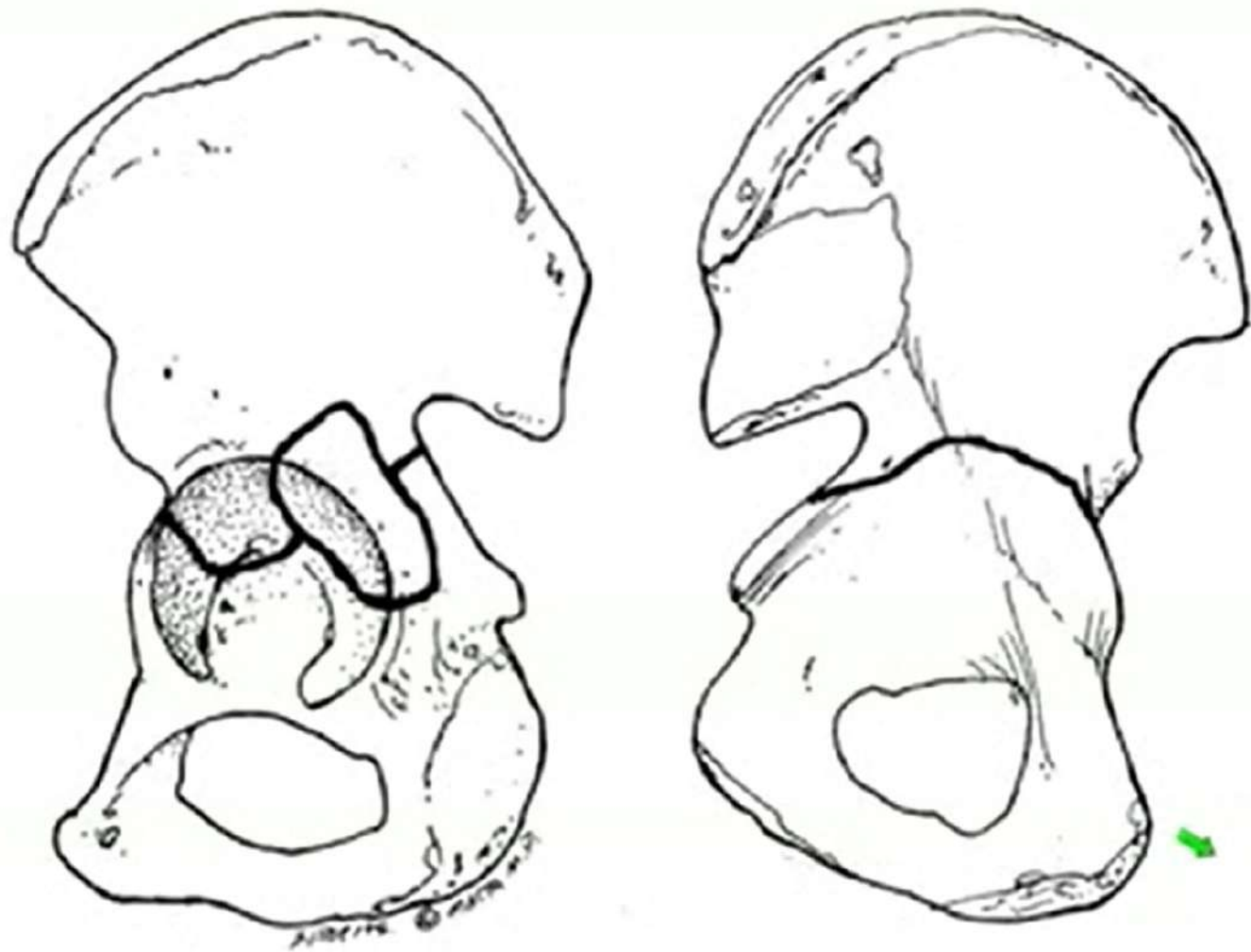


**Posterior Column plus
Posterior Wall**

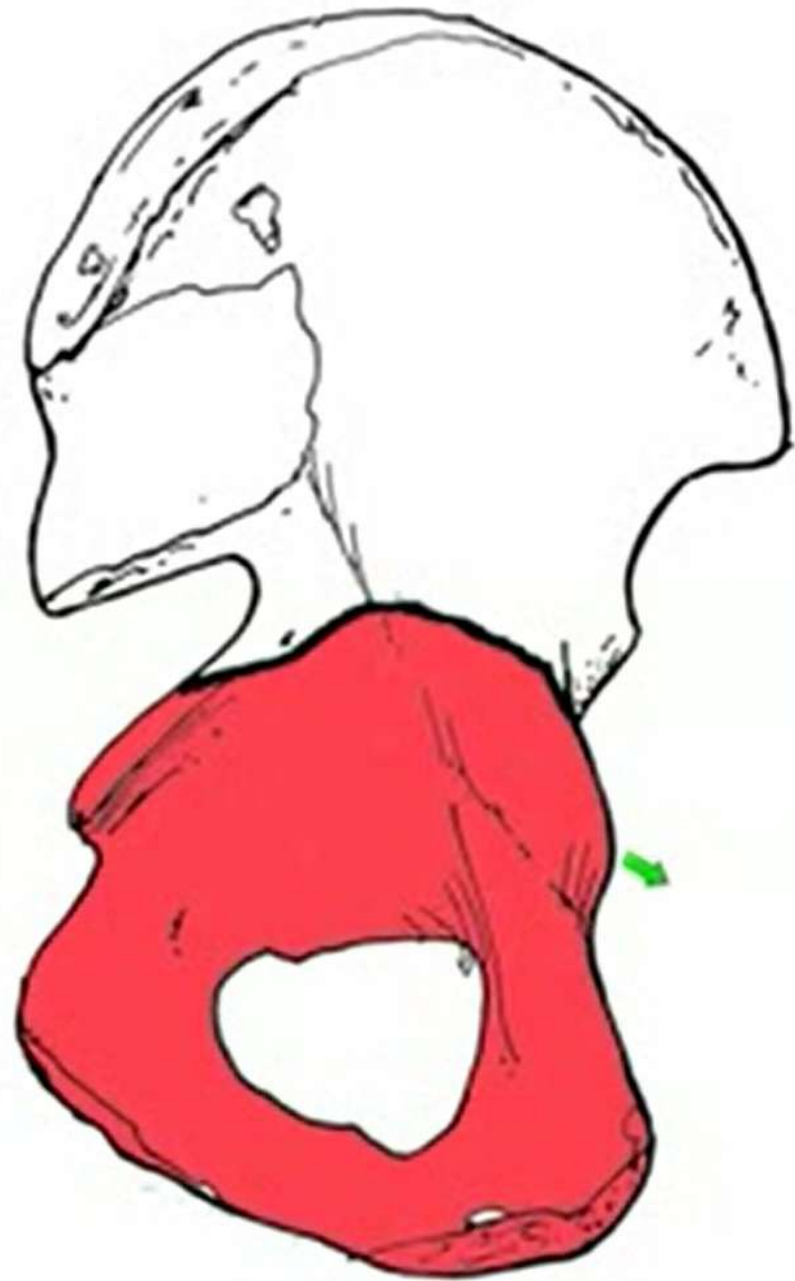
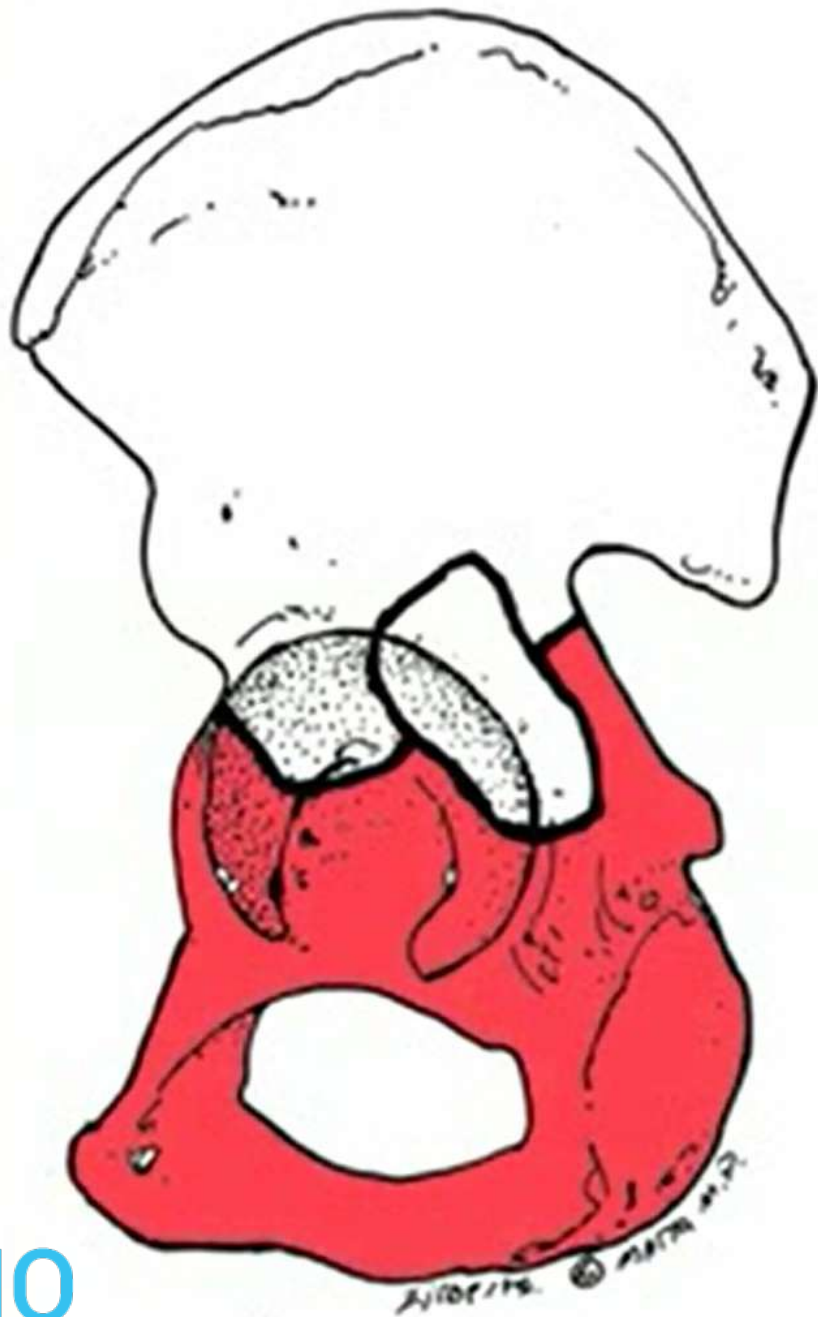






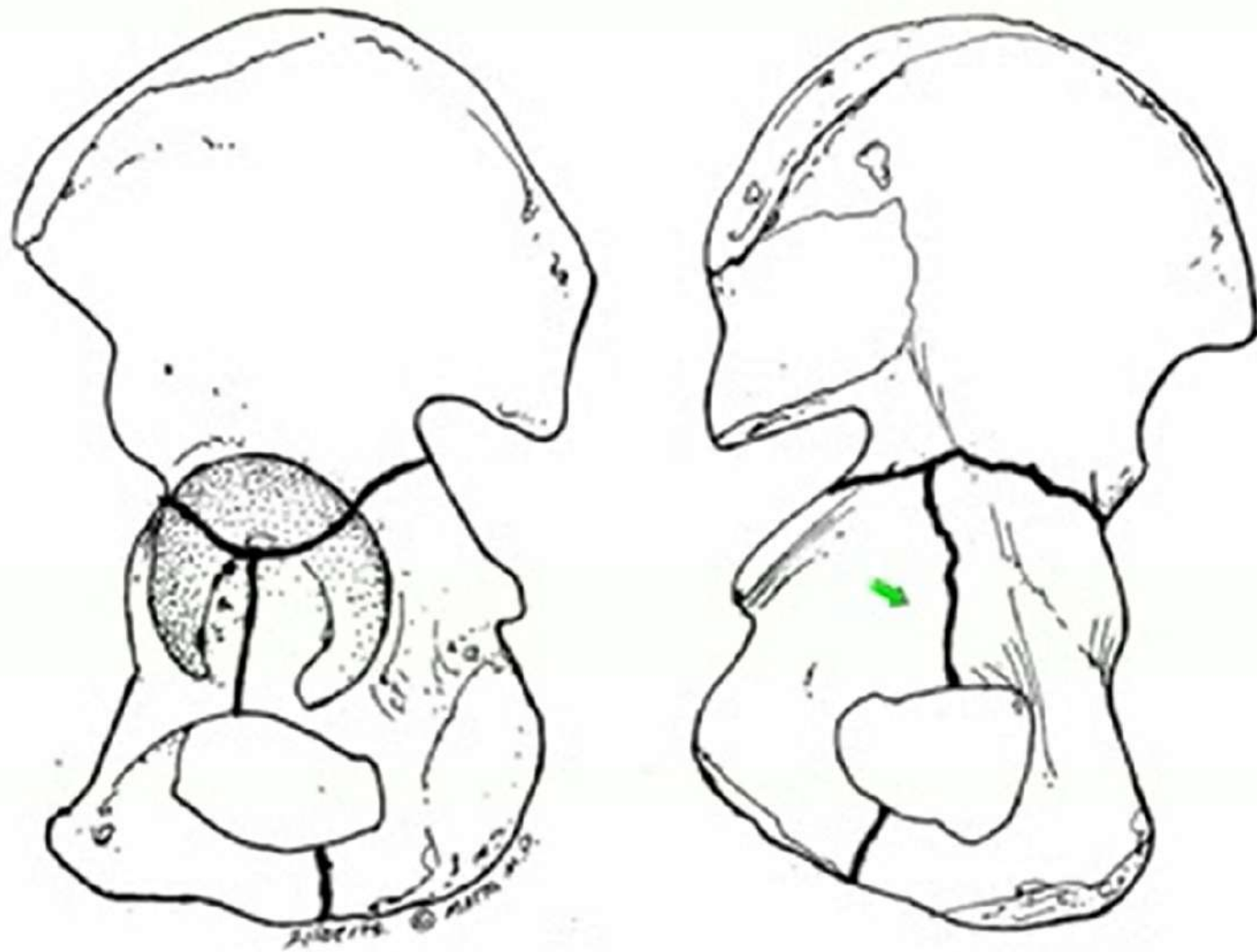


**Transverse plus
Posterior Wall**

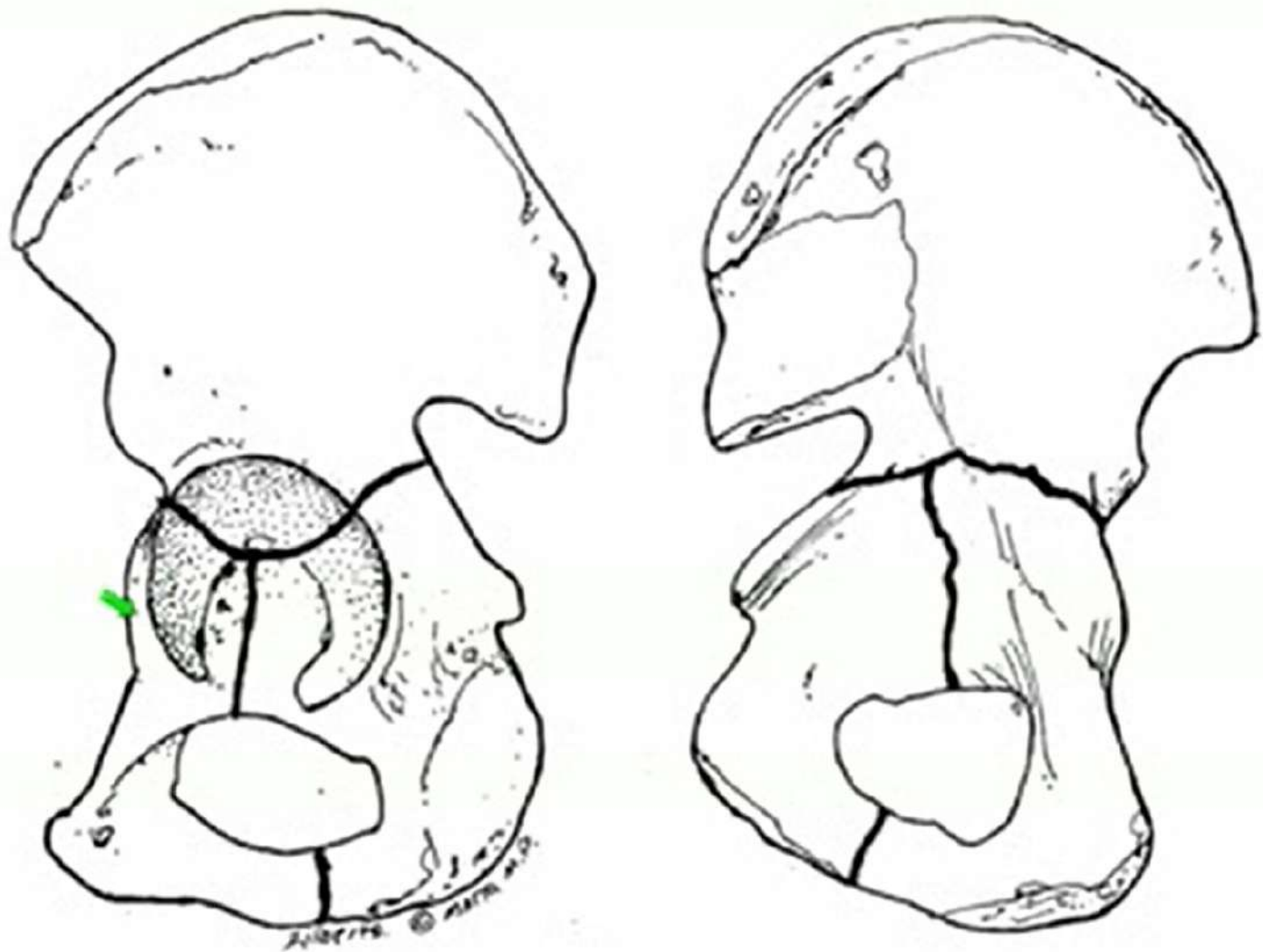




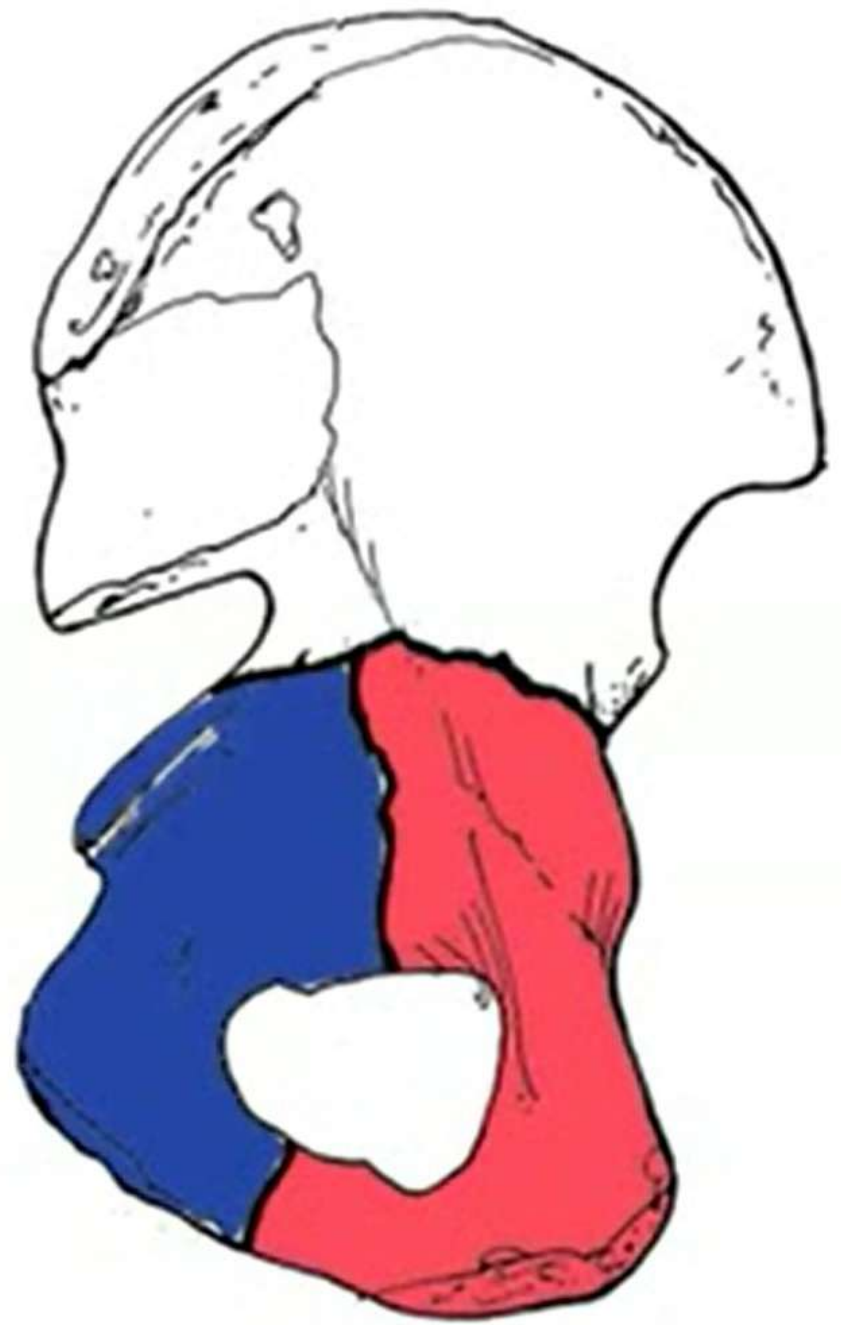
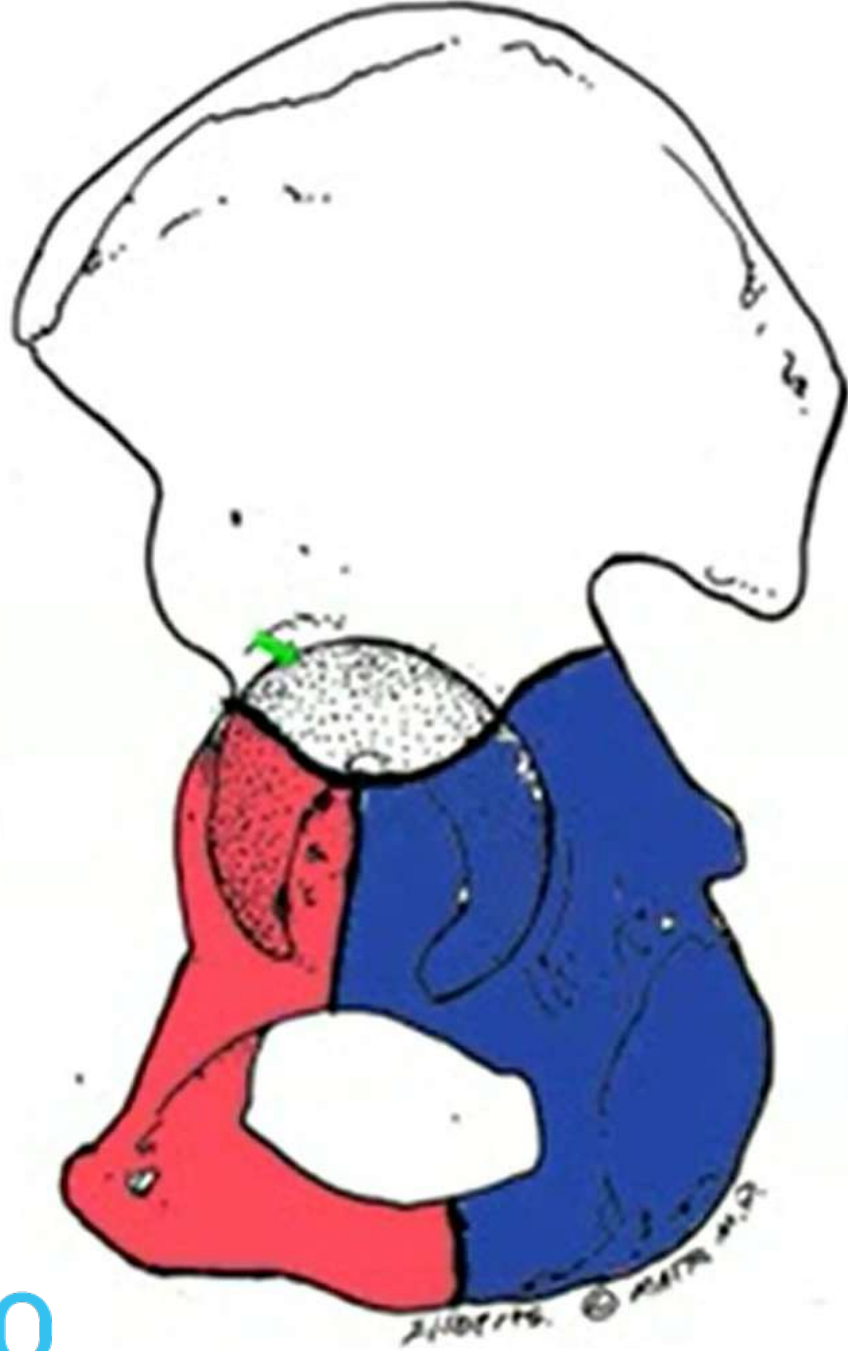




T-shaped Fracture

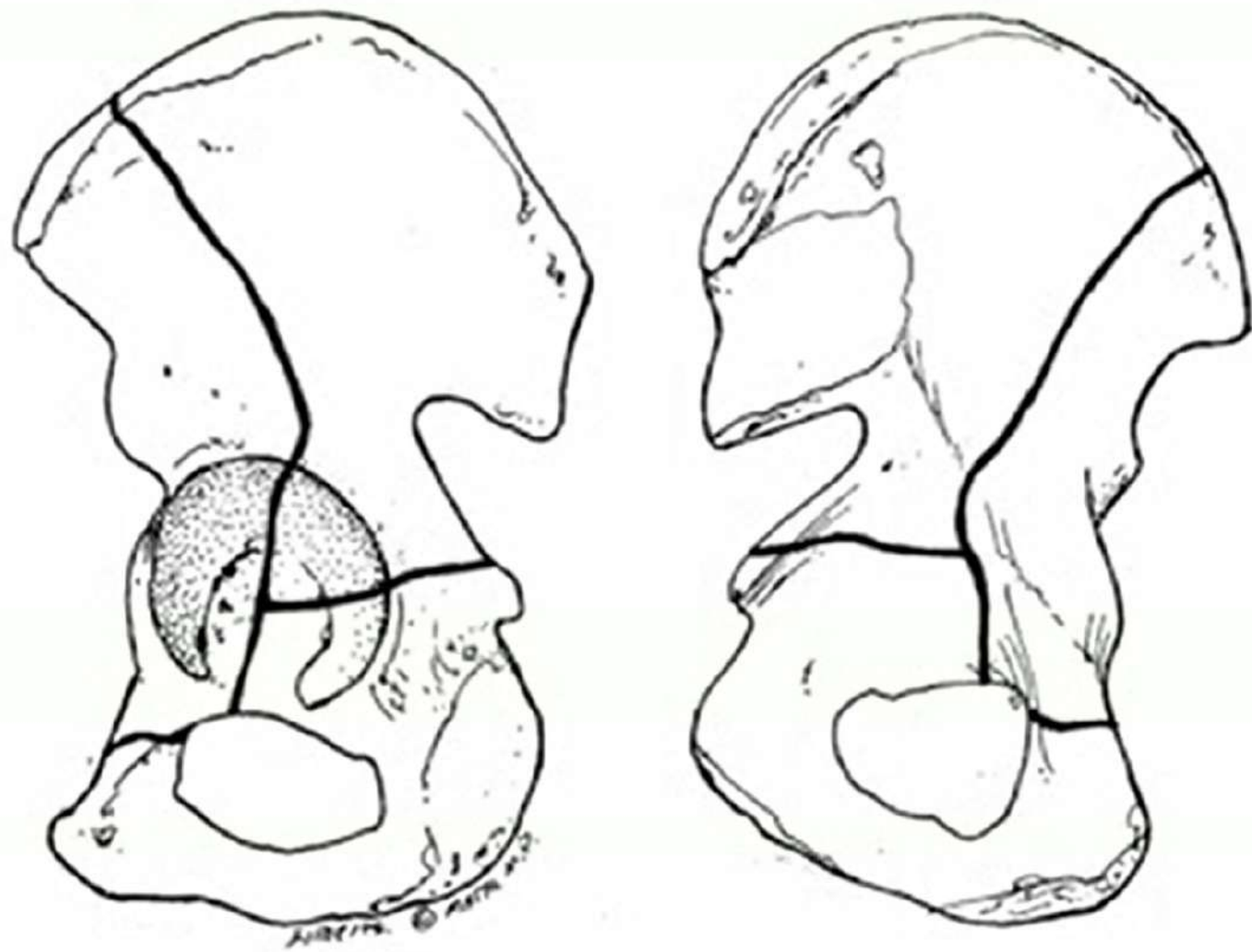


T-shaped Fracture

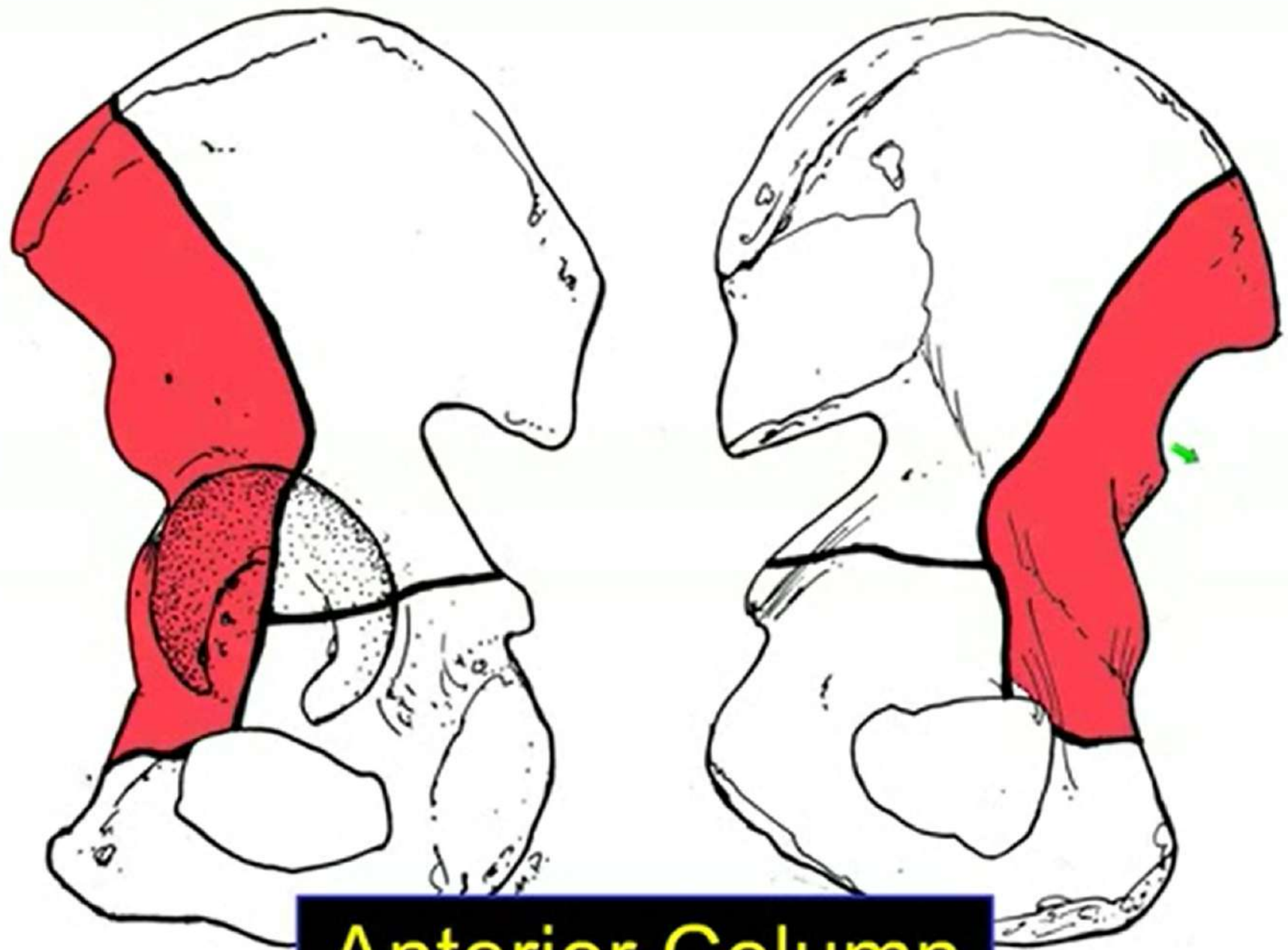




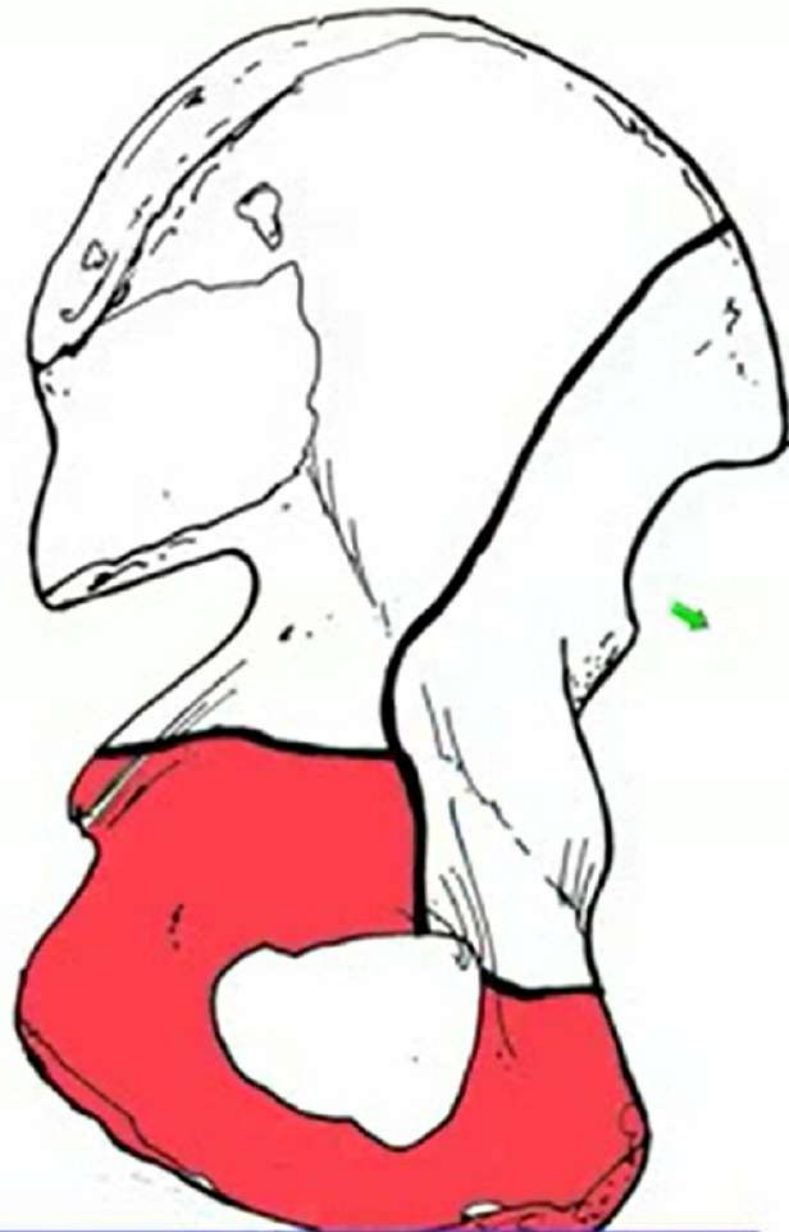
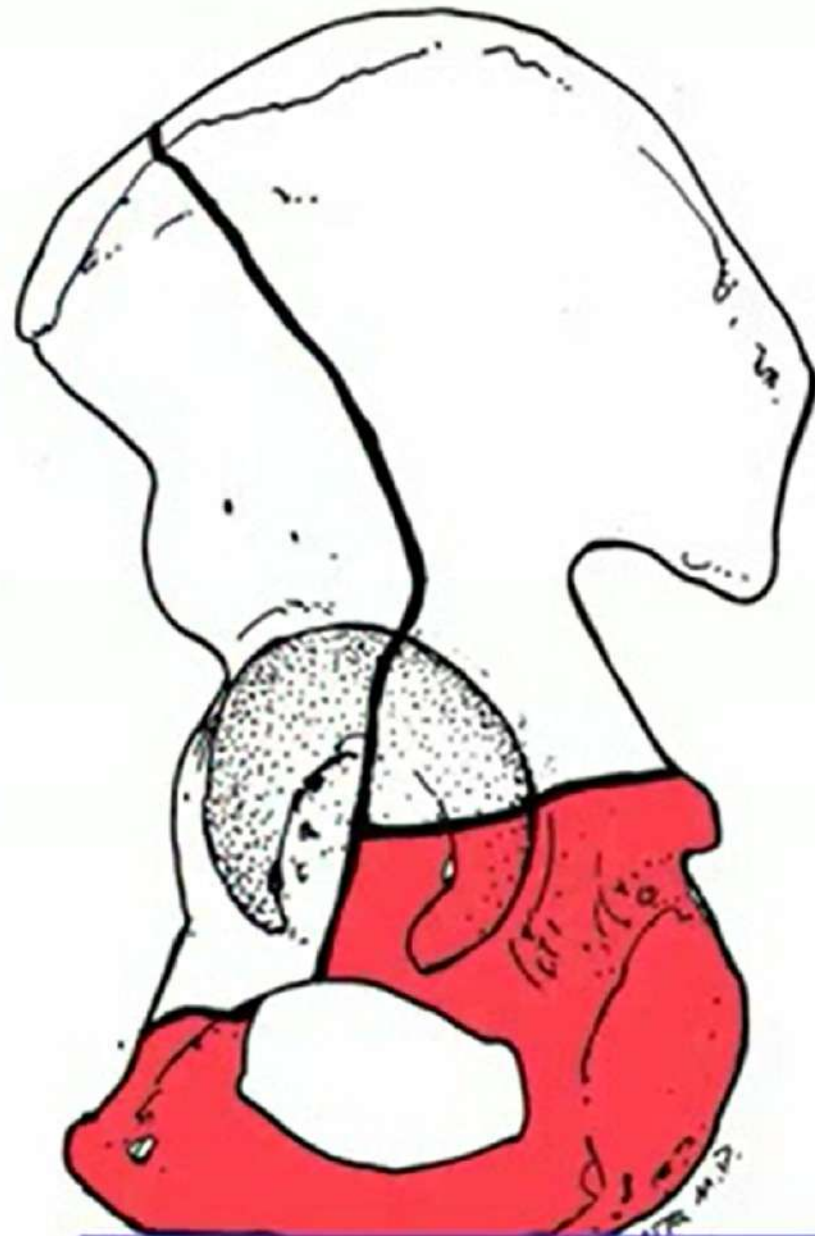




**Anterior Column plus
Posterior Hemitransverse**



Anterior Column



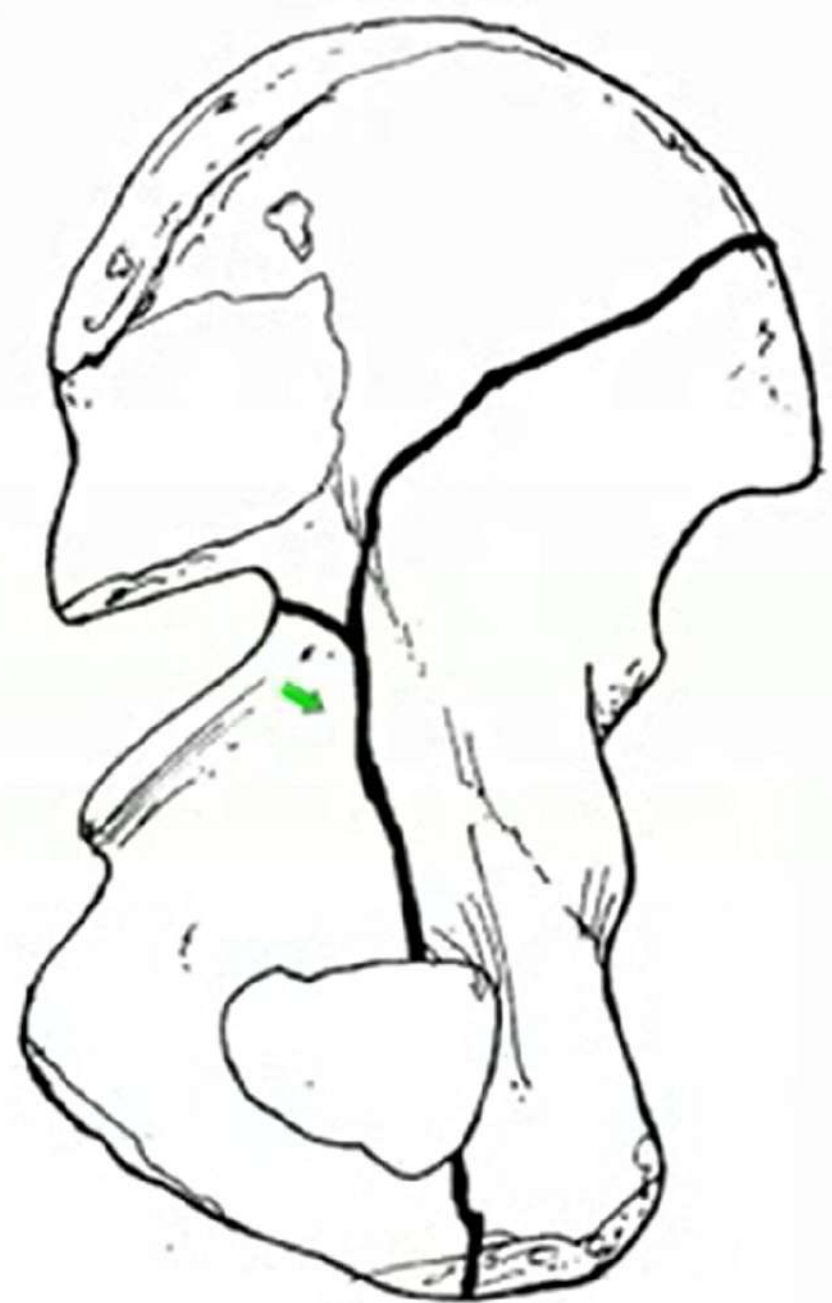
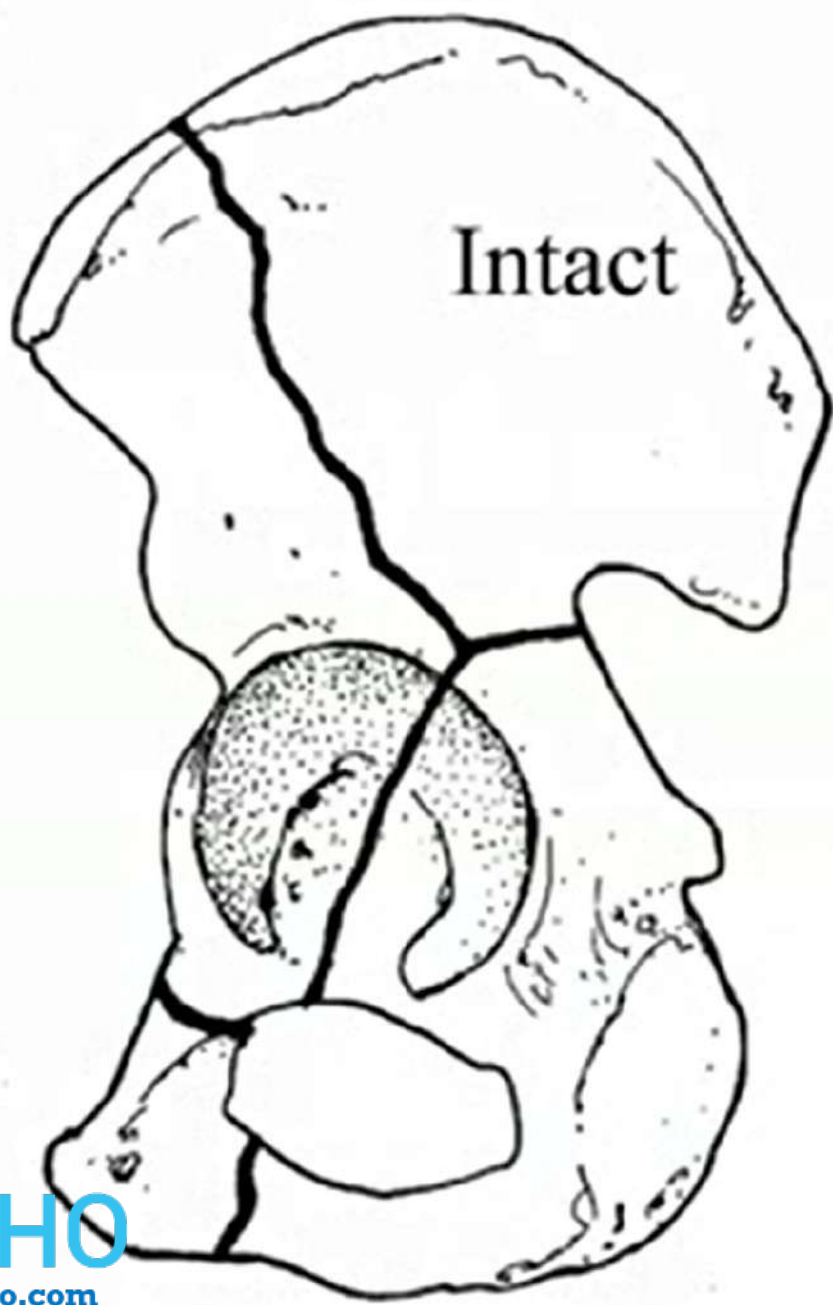
plus Posterior Hemi-transverse

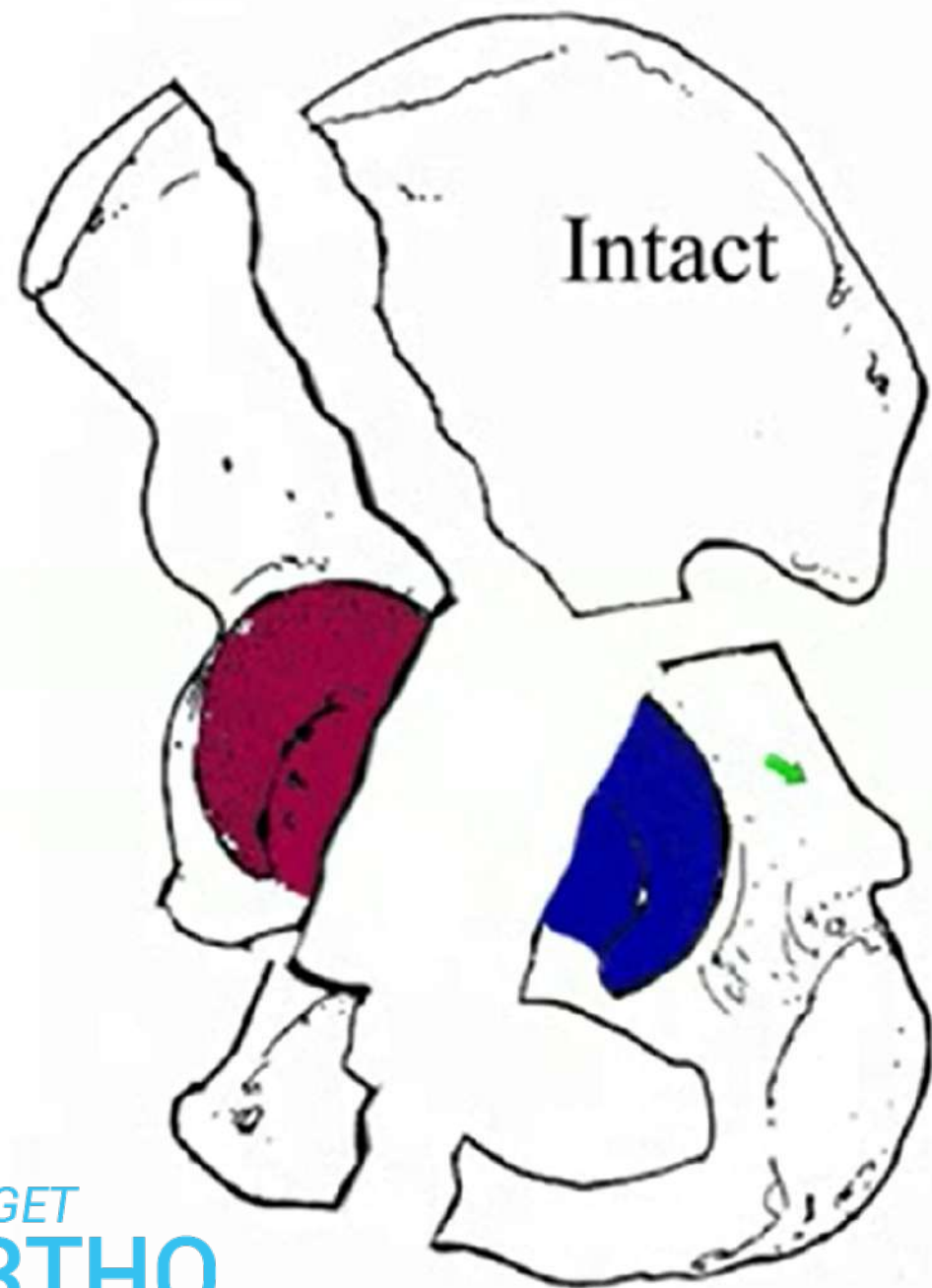


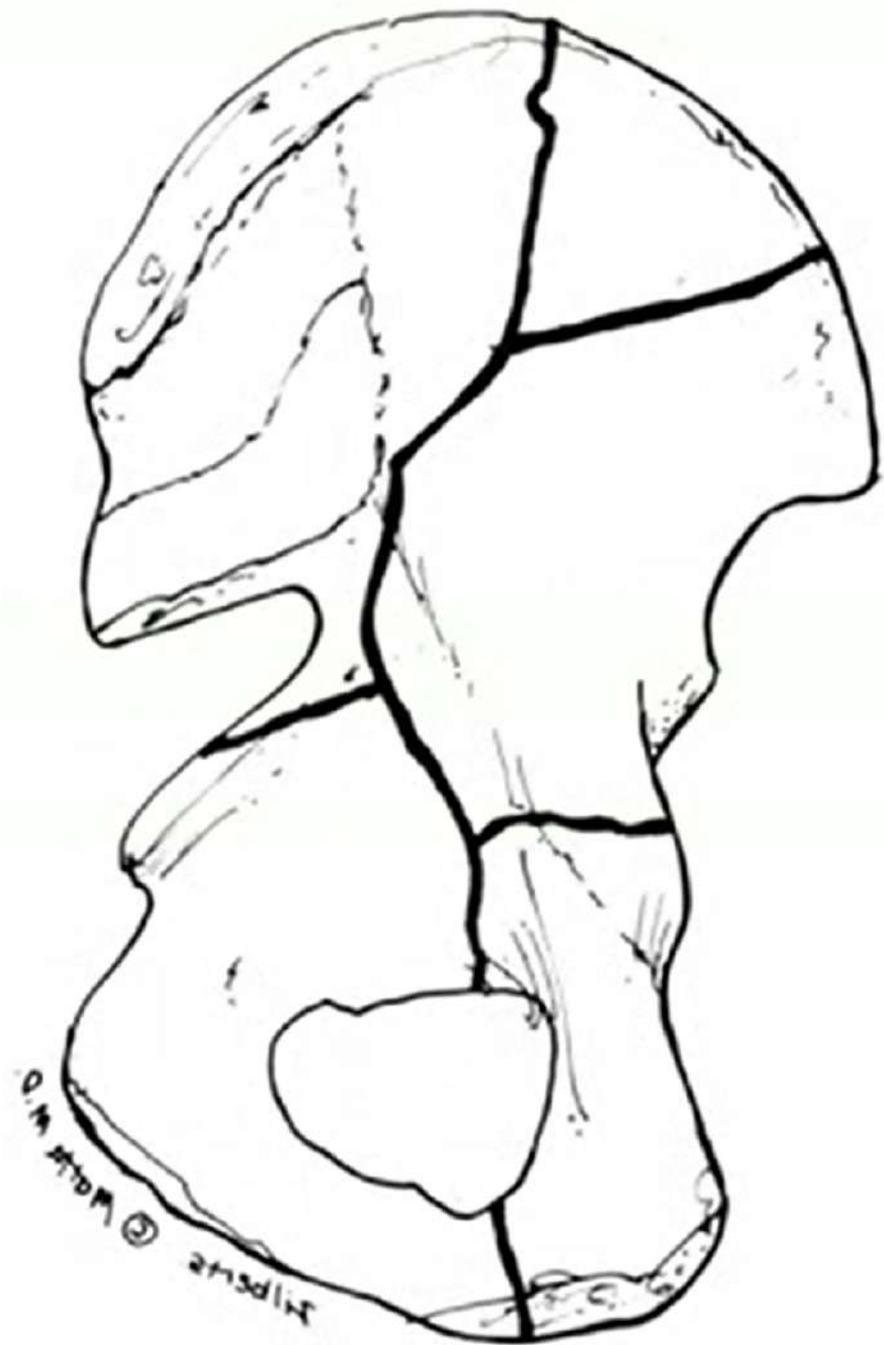
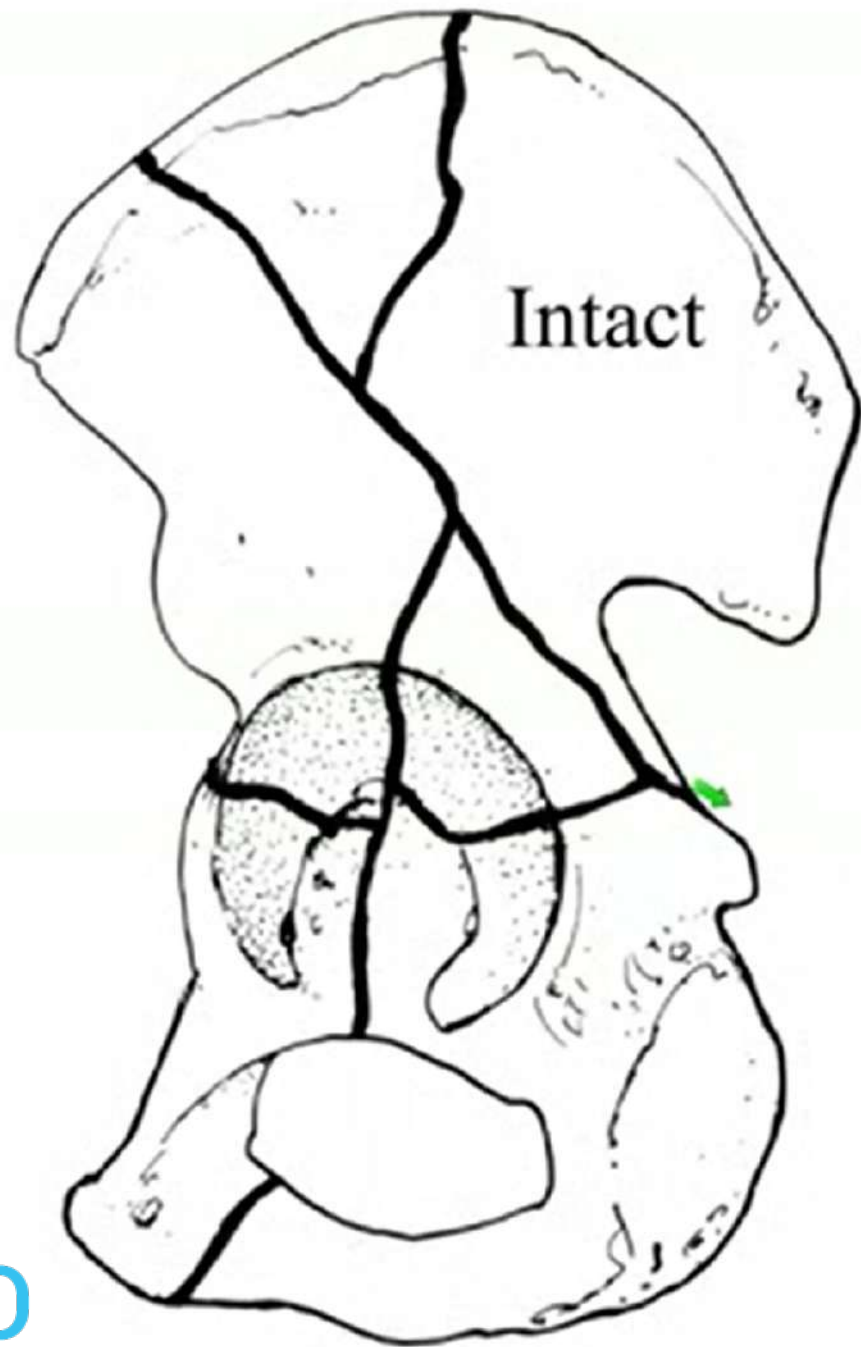


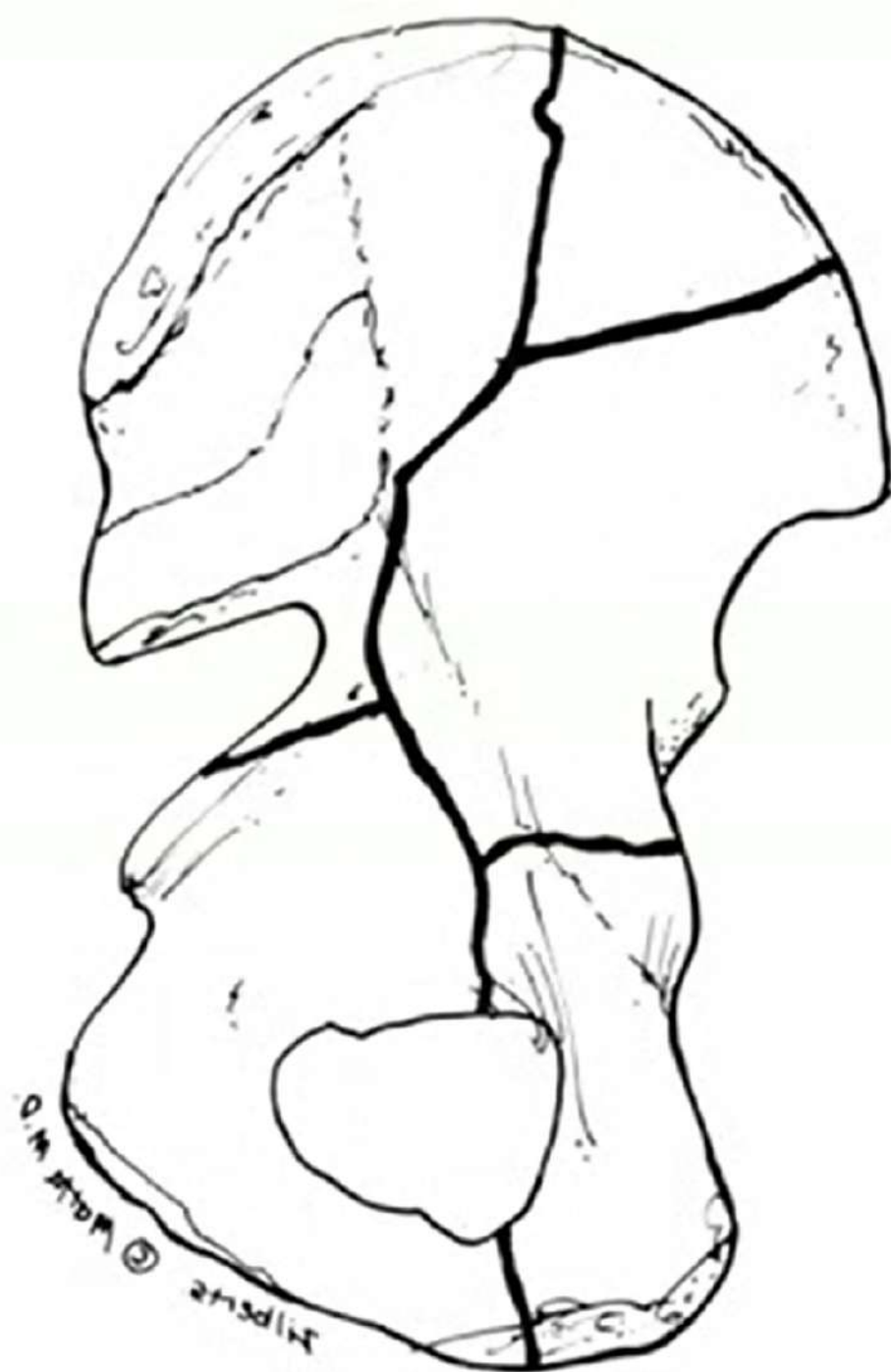
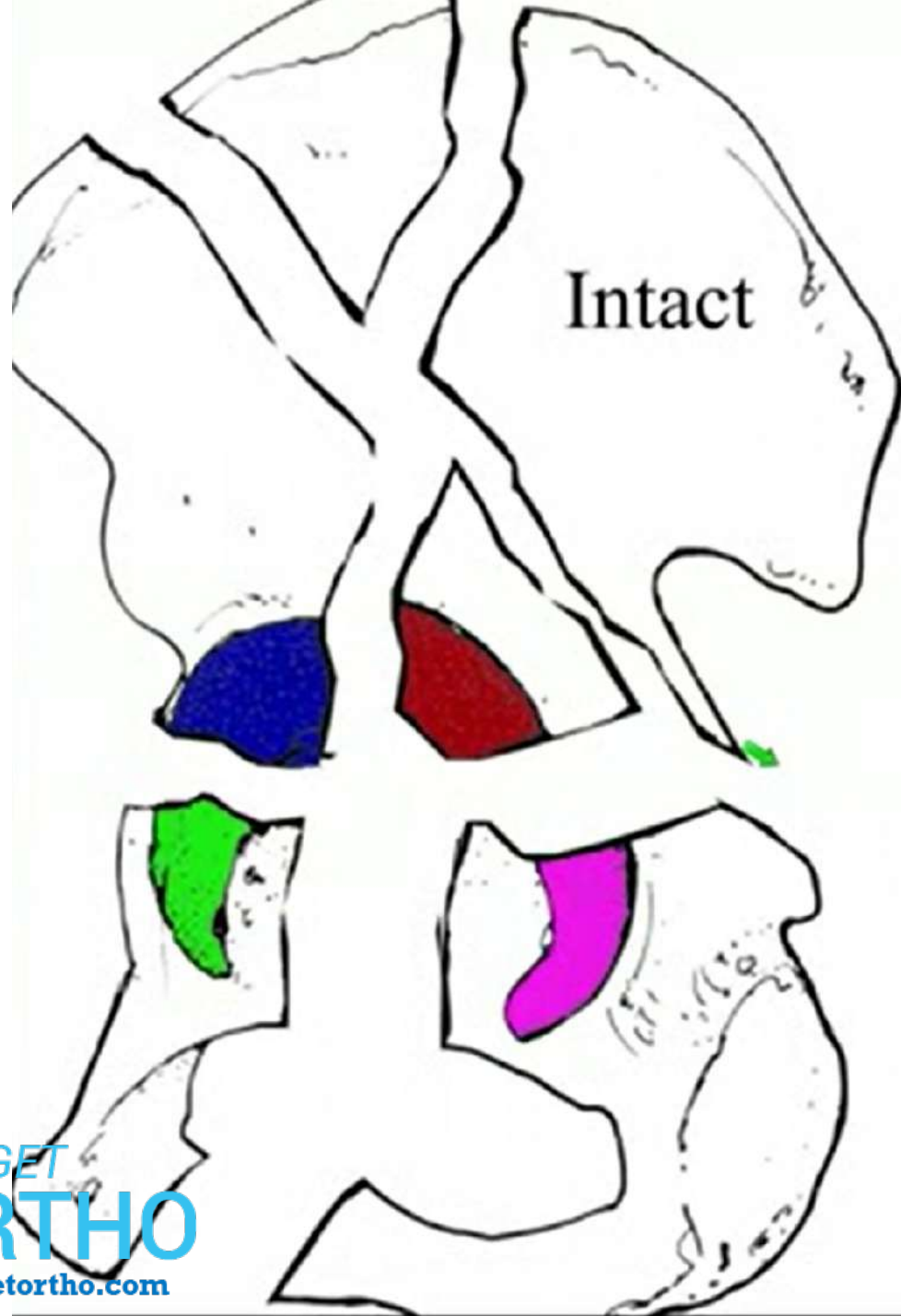
What is an Associated Both Column Fracture ?

One in which all segments of the acetabular articular surface are detached.













Treatment Protocol

- Radiographs Allow Proper Fracture Classification
- Fracture Location and Displacement Determine Need for Surgery
- Fracture Pattern Determines Approach